



Bethnal Green Road, London, E2

BUTLER & STAG



Smartly presented one bedroom flat in a vibrant and well-connected Bethnal Green location.



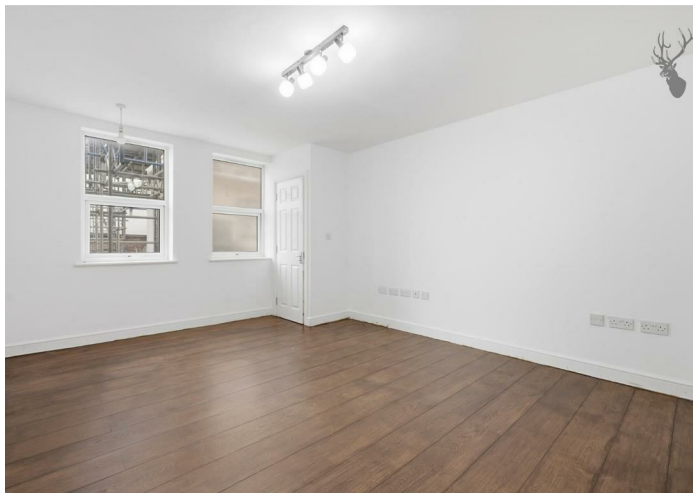
- Smart One Bedroom Flat
- Spacious Living Room
- Weavers Fields Location
- Unfurnished
- Second Floor
- Modern Kitchen and Shower Room
- Close to Shoreditch and Hackney Road
- Available Now!

Positioned close to some of East London's favourite hotspots including Weavers Fields, Columbia Road, Brick Lane and Hackney Road, this second floor property puts you at the heart of the action with plenty of transport links also on your doorstep for easy access across the capital.

In excellent condition throughout and comprising of a spacious living room, modern kitchen, double bedroom and contemporary shower room, this property would be perfectly suited to a single professional or couple.

Offered unfurnished and available immediately.

EPC Rating C
Council Tax Band B (TBC)





Bethnal Green Road

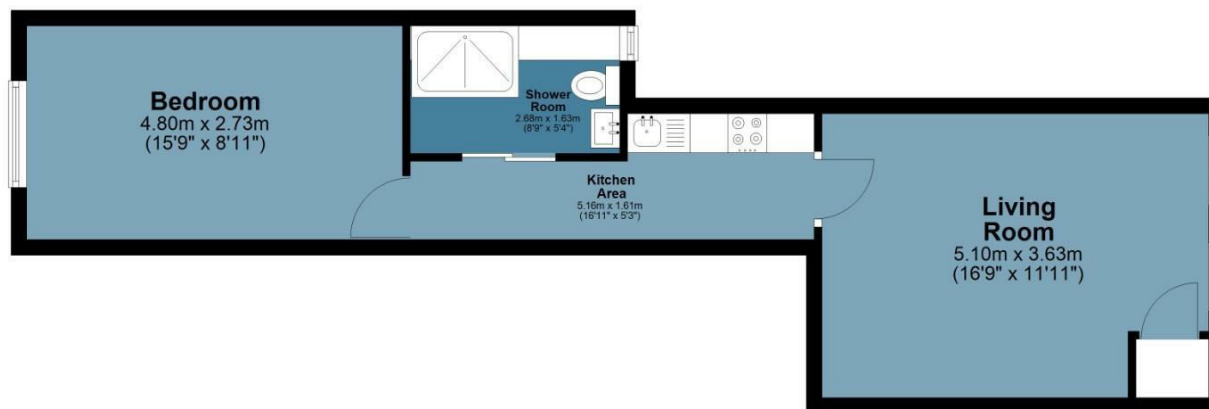
Approx. Gross Internal Area 43.3 Sq M (466.2 Sq Ft)

BUTLER & STAG



Second Floor

Approx. 43.3 sq. metres (466.2 sq. feet)



Measurements are approximate and for illustration purposes only. While we do not doubt the accuracy and completeness, we advise you conduct a careful independent assessment of the property to determine monetary value.
© @modephoto.uk www.modephoto.co.uk

IMPORTANT NOTICE - These particulars have been prepared in good faith and they are not intended to constitute part of an offer or contract. We have not performed a structural survey on this property and the services, appliances and specific fittings have not been tested. All photographs, measurements, floor plans and distances referred to are given as a guide and should not be relied upon.

BUTLER & STAG

☎ 020 8102 1236

🏠 508 Roman Road, Bow, London, E3 5LU

✉ bow@butlerandstag.com

www.butlerandstag.uk